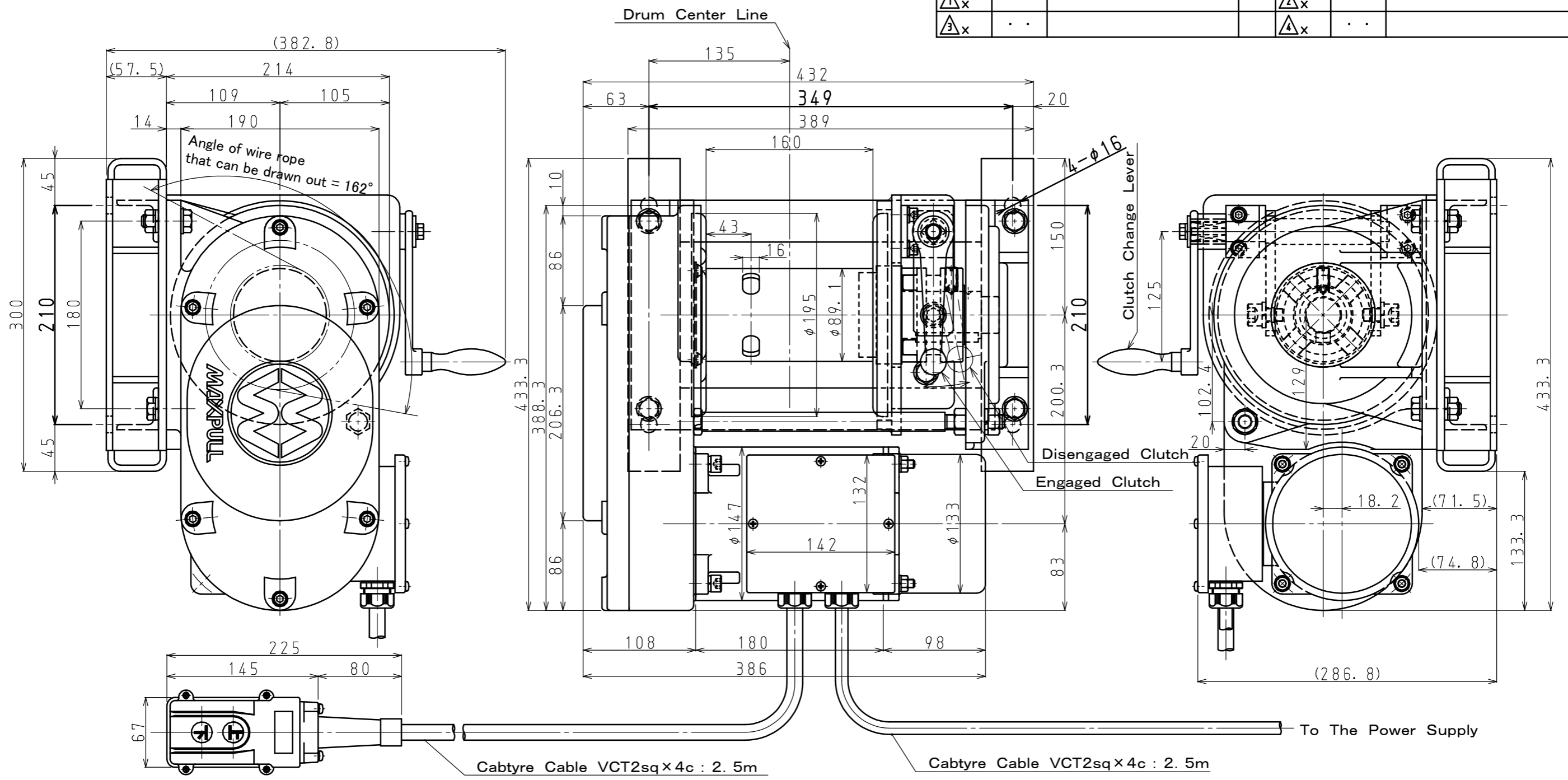


REVISION	...				
△x	..		△x	..	
△x	..		△x	..	



It is necessary the fleet angle is 2 degrees or less to prevent the wire rope being unevenly wound to wind the wire rope uniformly. Please install the pulley 2400mm or more away from the drum on the drum center line.

SPECIFICATIONS			(The wire rope composition is a manufacturer recommendation.)	
Power Supply	50Hz AC200V 3-PHASE	60Hz AC200/220V 3-PHASE	Electric Motor	0.4kW/4-Pole Totally Enclosed Non-Ventilated Built-in Motor Insulation Class : B Duty Factor : 40%ED Rated Current Value : 2.2A(AC200V/50Hz) : 1.9A(AC200V/60Hz) : 1.9A(AC220V/60Hz) Electromagnetic Brake(Spring Actuated Type)
Load Rating Up to 3rd Layer	1274N (=130kgf)	1078N (=110kgf)		
Line Speed	3rd Layer	13.5m/min	Painting Specification	Air-Sprayed Coating (Cold Curing) Under Coat : Epoxy Resin Paint (Gray) Final Coat : Silicon Urethane Paint (Silver)
	5th Layer	16.2m/min		
Drum Capacity	3rd Layer	φ6mm(6×37, JIS)×23.6m		Painting
	5th Layer	φ6mm(6×37, JIS)×43.6m		
Gear Ratio	1/40.3		Baked Enamel, Two Coats Painting Color of Steel Parts : Dark Gray (Munsell N-3) Painting Color of Aluminum Parts : Silver Metallic	
Weight	47.3kg			

MARK	PARTICULARS	MATERIAL	TEST PIECE	WORKING NO. REQUIRED	SPARE (PBR)	TOTAL	PER ONE		REMARKS
							WEIGHT IN kg	QUANTITY	
MANAGER							WORK NO.		
DEPUTY MANAGER							CLASSIFICATION		SCALE
CHIEF	I. Takahashi	Parallel Type Winch with Built-in Motor					DRAWING NO.		BMW201SC-110701-01E
ENG'R IN CHARGE									
CHECKED BY			Manually Operated Dog Clutch						
DRAWN BY	T. Yonezawa		MODEL BMW-201-SC						
DATE DRAWN	2011/07/01								

